

MANUAL USER for „TRAP RECEIVER,,

Description

Trap Receiver serves for monitoring and displaying SNMP (Simple Network Management Protocol) alarms. It allows instant display of alerts from any network device that supports SNMP.

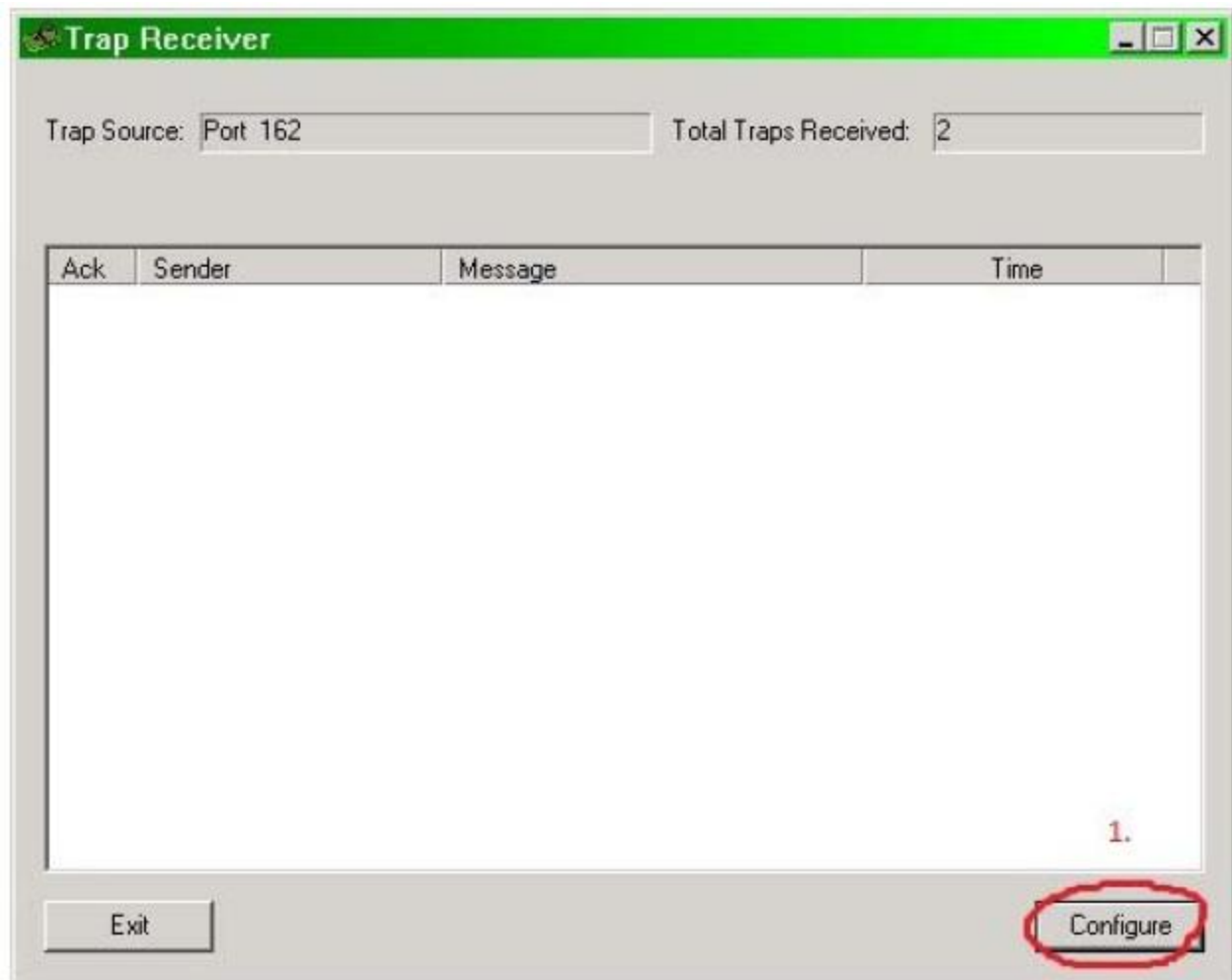
Setting up the program for sending email notifications

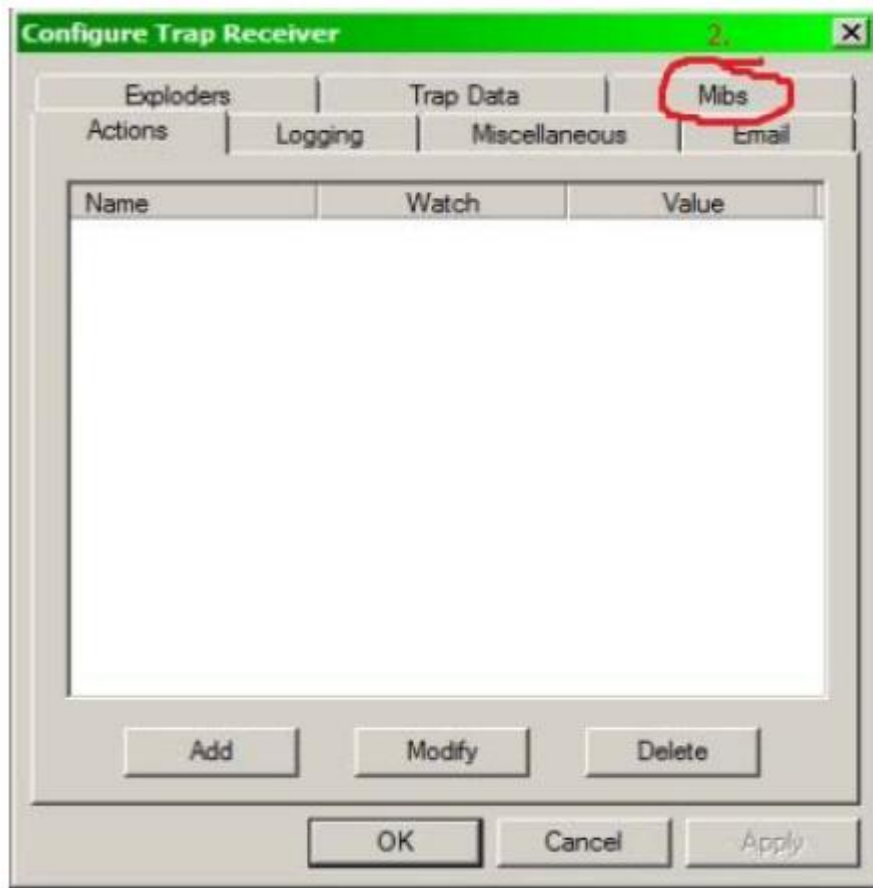
For the program to work successfully, it is necessary to open UDP port 162 on your computer's firewall.

After installing the program according to the standard procedure (for Windows platforms), it is necessary to set up the program to work with Smart Sinus UPS devices with a LAN card.

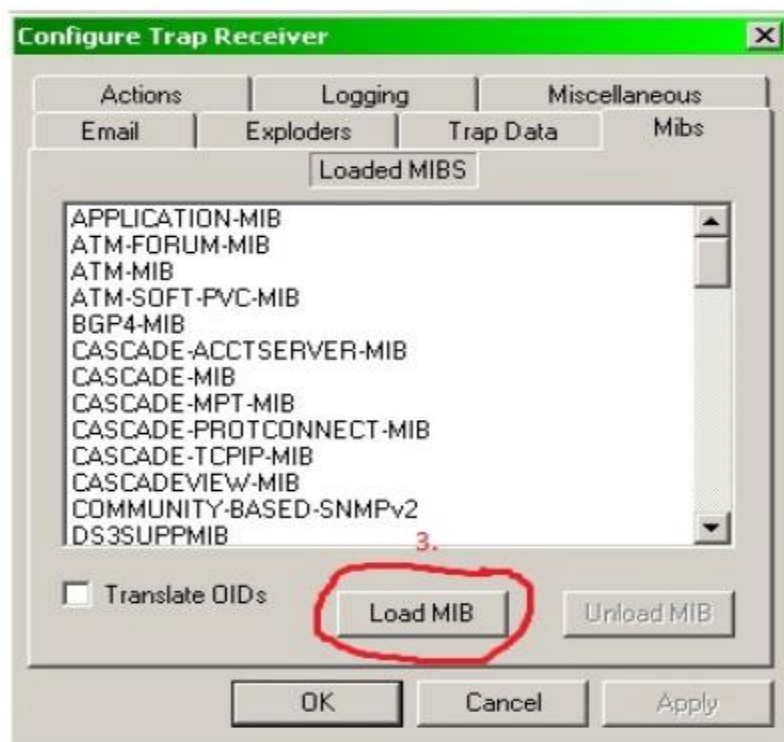
To enable the Trap Receiver program to work with the Smart Sinus UPS device, you need to first import the appropriate MIB file into the program.

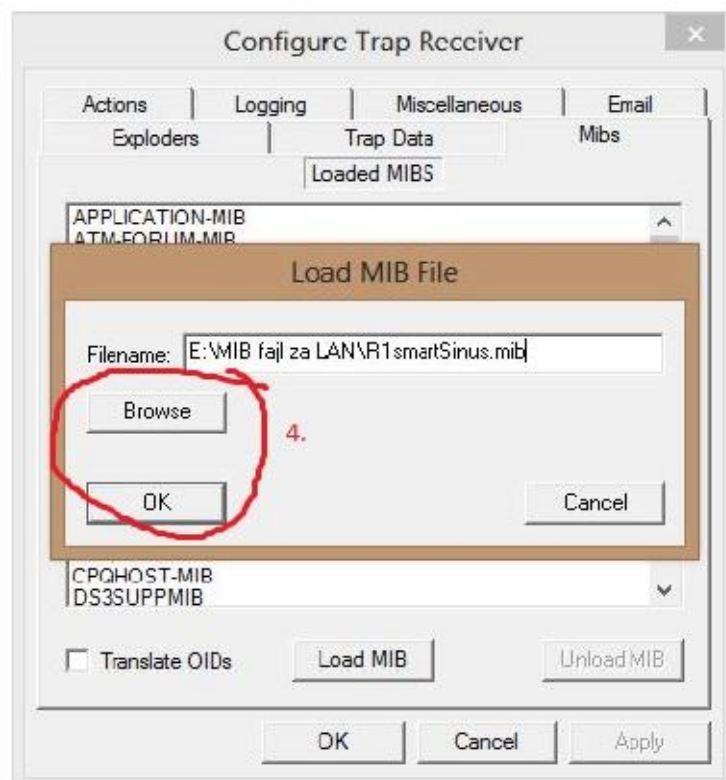
On the main screen, in the lower right corner, click the "Configure" button and then select the Mibs tab.





Press the “Load MIB” button and find the “R1smartSinus.mib” file located in the “MIB file for LAN” folder, press the OK button and the file will be loaded into the program.





After successfully importing the file, you need to set the parameters of your mail server, so that it can successfully send reports on changes to the UPS device.

On the "Email" tab, click Add and set the parameters of your mail server and the mail addresses to which you want to receive notifications from the UPS device.



Add Receptient

SMTP Server:

SMTP Port:

From:

To:

Subject:

Message:

☐ SSL Required

☐ Authentication Required Set...

Add Cancel

Enter the parameters of your mail server. In the image below you can see the settings using a Gmail account:

Add Receptient

SMTP Server:

SMTP Port:

From:

To:

Subject:

Message:

☒ SSL Required

☒ Authentication Required Set...

Add Cancel

Set SMTP Authentication

User/Account:

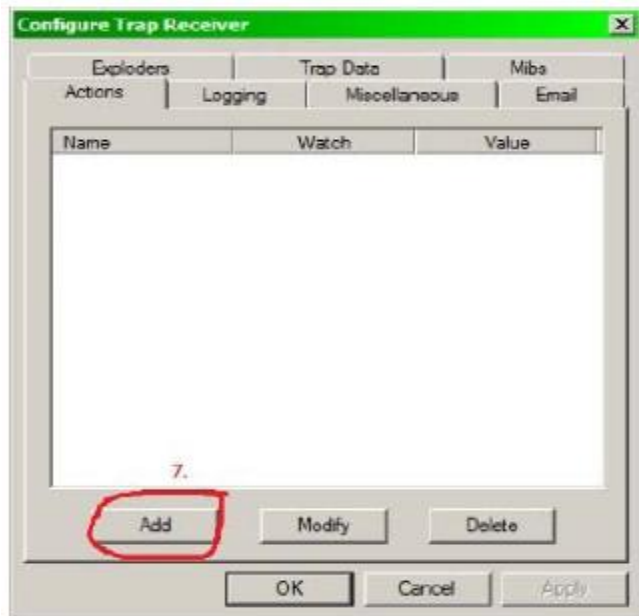
Password:

OK Cancel

If you have several UPS devices with a LAN card in your network, you can enter the message "An alarm has occurred on the UPS (%SENDERIP%)" in the Message field, and a message with the IP

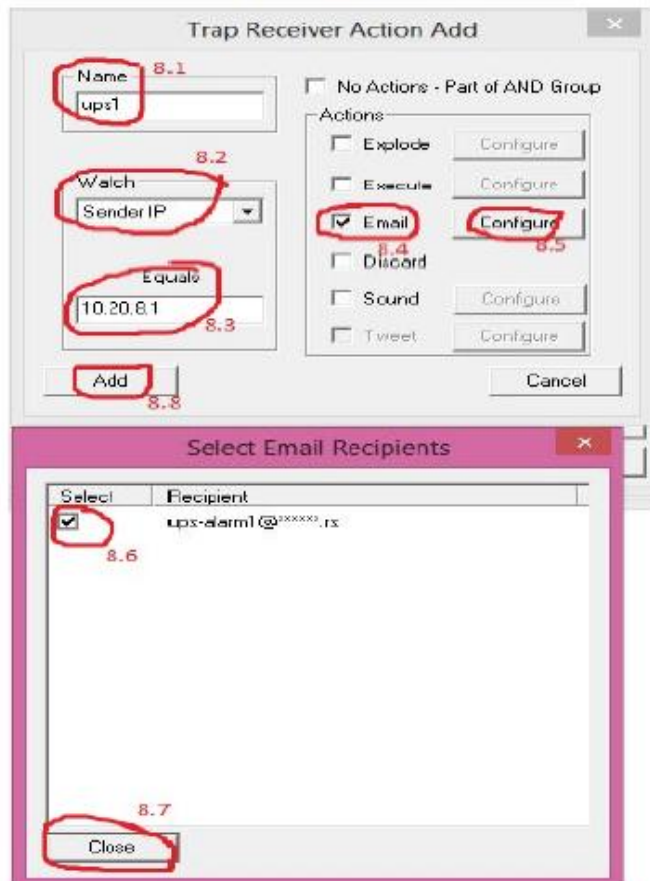
address of the UPS on which the alarm occurred will be sent to your email. Eg: An alarm occurred on UPS 10.20.8.1 or An alarm occurred on UPS 10.20.8.10...

- After setting up the email, it is necessary to press the OK button once more, in order to successfully save the parameters, and thus you return to the initial window of the program.
- It remains to configure the alarms you want to receive from your UPS device.
- On the initial window of the program, press the Configure button, and then in the Action tab, which has opened, press the Add button.

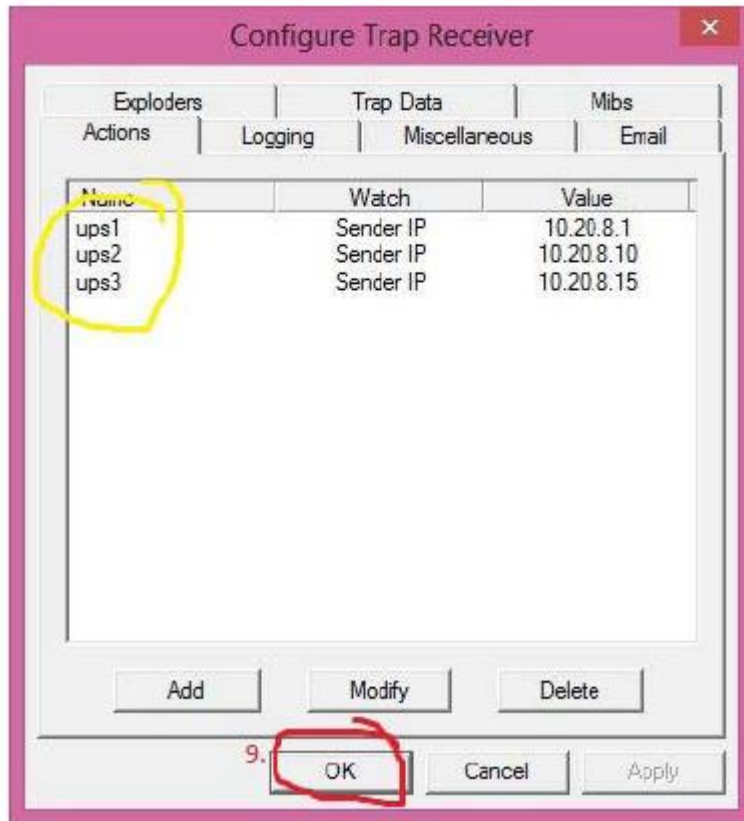


- In this step, you need to make an entry in the program for each UPS device you have in the network, so that the program can forward emails for each of them.

Alarms should be entered as follows:



- After adding all the devices you have in the network, you should have a list of all UPS devices in the Action window and you need to press the OK button at the end.



- With this, you have set up the Trap Receiver program for receiving SNMP alarms from the UPS device and forwarding them to email.
- If an alarm occurs on the UPS device, the message will also include the IP address of the device from which it originates, and you can view more detailed information about the type of alarm via a web browser at the address: http://IP_ADRESA_UPS_UREĐAJA. (Eg: <http://10.20.8.60>).

MM Elektrolab Smart Sinus - Mozilla Firefox

File Edit View History Bookmarks Tools Help

MM Elektrolab Smart Sinus

192.168.1.58

Most Visited Getting Started MM elektrolab PTC :: Haciaoena B92 - Internet, Radio i... YouTube Audience Overview - ... Workspace Login Фейсбук норо ПОЛИТИКА

Smart Sinus UPS Model: T22

Monitoring values		Alarms	
Name	Value	Alarm type	Status
Input Voltage	214 V	Network fault	Regular
Output Voltage	214 V	Empty Battery	Regular
Output Power	0 %	Check Battery	Regular
Input Frequency	50 Hz	Overload	Regular
Battery Voltage	100 %	Overcharge	Regular
Temperature	16 C	Overheat	Regular
Serial Number	1022	By-pass	Regular

Copyright © 2013 MM Elektrolab All rights reserved.

- You can see details about the alarm in the program itself, which displays three data: Trap Source (UDP port number), the total number of received alarms and the list of alarms.

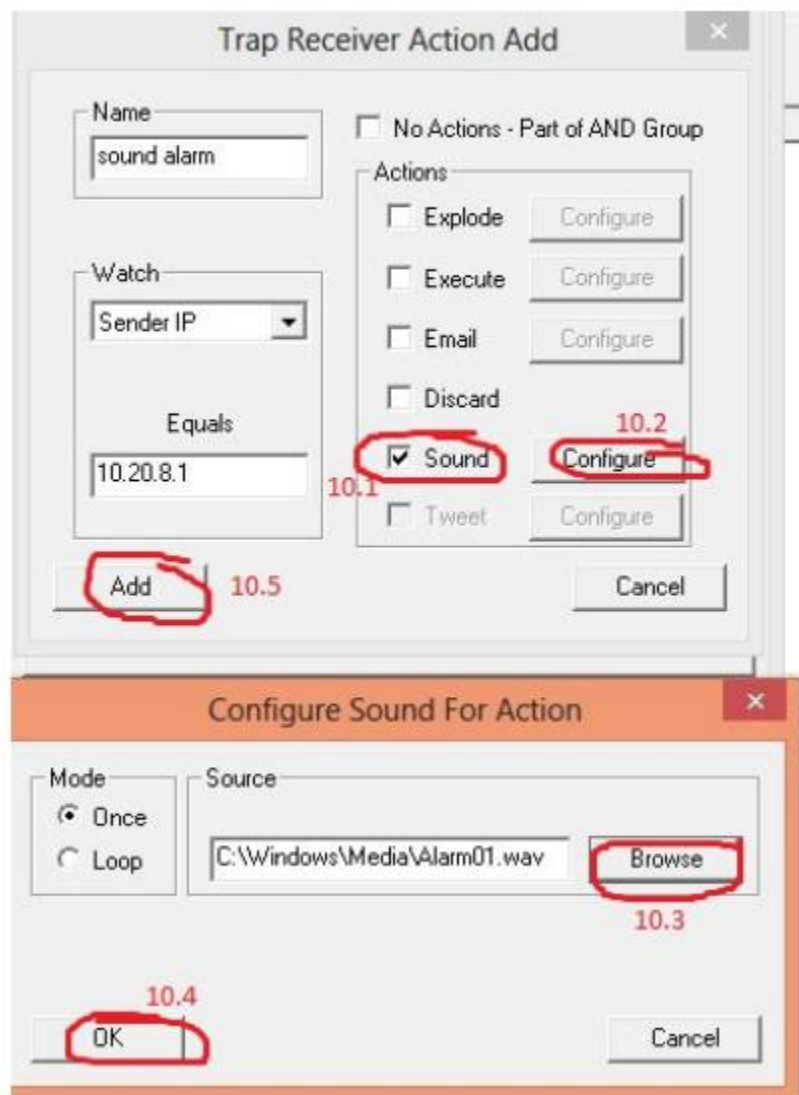
Ack	Sender	Message	Time
<input type="checkbox"/>	192.168.1.15	adslAtucPerfESsThreshTrap	22:06:15 01/05/02
<input type="checkbox"/>	192.168.1.15	adslAturPerfLofsThreshTrap	22:06:03 01/05/02

- To generate a detailed view for just one alarm, double-click the desired alarm on the main display screen.

OID	Type	Value
adslAturPerfCurr15MinLofs	Integer	300
adslAtucThresh15MinLofs	Integer	200

Additional notices

- In the event of an alarm, the Trap Receiver can sound an audible signal or start a program of your choice. All these options can be done together with already existing alarms for sending emails. Setting up an audible alarm in case of an SNMP Trap is similar to setting up for forwarding an email message, and you need to do the following:
- Press the Configure button, from the program's initial window, then click Add or Modify on a previously set alarm, check the Sound field, and then find the file you want to play when the alarm occurs via the Configure button. Only files with *.wav extension are supported.



Detailed instructions in English for using the Trap Receiver program can be found at:
<http://www.trapreceiver.com/trapreceivermanual.html>